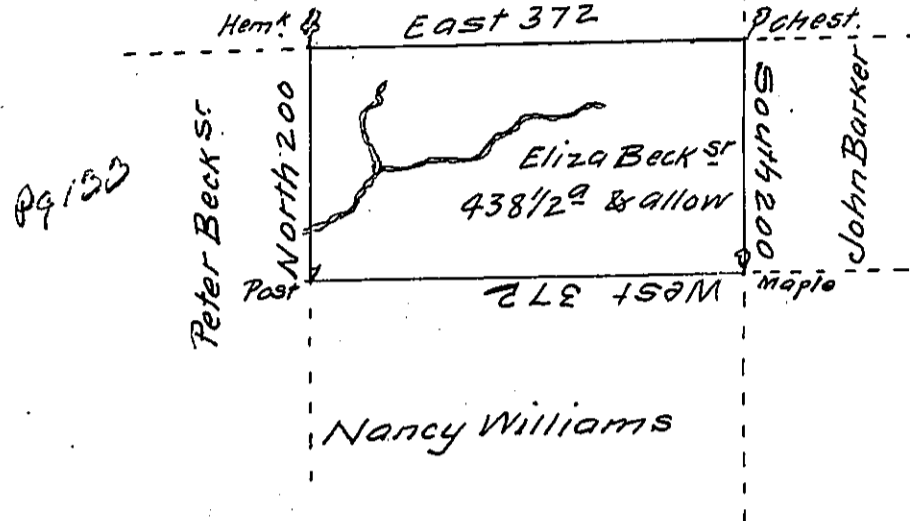


C13-110

Eliza Beck Jr



Situate in the County of Northumberland. Surveyed on the
 16th day of November 1793 for Eliza Beck by virtue of her War-
 rant bearing date the 27th day of July 1793 containing
 Four hundred thirty eight acres & a half with the usual allow-
 ance &c

Jos. Wallis D.S.

To Daniel Brodhead Esq^r }
 Surveyor Gen^l }

IN TESTIMONY that the above is a copy of the original remaining on file in
 the Department of Internal Affairs of Pennsylvania, made
 conformably to an Act of Assembly approved the 16th day of
 February, 1833, I have hereunto set my Hand and caused
 the Seal of said Department to be affixed at Harrisburg,
 this twenty eighth day of June 1911

Wesley Howard
 Secretary of Internal Affairs.